

# Biomtec

## Dental Implant Systems



# Biomtc

## Dental Implant Systems



<i>Index</i>	1
<i>Research &amp; Development &amp; Sterile Conditions</i>	2
<i>Quality Control</i>	3
<i>Traceability &amp; Digital Solutions</i>	4
<i>Packaging &amp; Labeling</i>	5
<i>SLA Surface</i>	6
<i>Implant Design</i>	8
<i>Implants</i>	9
<i>Prosthetics</i>	11
<i>Healing &amp; Impression</i>	13
<i>Abutment Options</i>	15
<i>Multi Unit Abutments</i>	19
<i>Prosthetics for CAD/CAM</i>	24
<i>Surgical Kits</i>	25



## Research & Development

Highly skilled and expert engineers are the developers of Biomtc Dental Implant Systems. Market demands, global allies and academic advisors have led our R&D team to come up with groundbreaking, innovative solutions.

Our professional team and its solutions inclines Biomtc brand to the path of being unrivaled in the market.

## Sterile Conditions

The packaging process of Biomtc Dental Implant Systems, is done in sterile, isolated rooms, that compatible with “Sterile Environment” standards.

Biomtc Dental Implant Systems are packaging in Iso 7 (Class 10000) clean rooms that is completely free of dust and particles in the air and validated regularly.

“Gamma Irradiation Sterilization” is applied to Biomtc Implant Systems before final packaging.





## Quality Control

The quality of Biomtc Dental Implant Systems are monitored in four different stages.  
Quality Control Stages for Biomtc :

- 1- Pre-Production Stage: **The Quality Control for Biomtc Dental Implant Systems begins with pre-production stage.** In this stage the quality and quantity of raw materials are examined to ensure that their numbers and characteristics are correct.
- 2- During Production Stage : **This stage begins shortly after production begins.** The aim of this stage is to identify early errors and deviations and give in time feedbacks. Thanks to this stage errors can be minimized.
- 3- After Production Stage: **After completion of a big part of packaging, the products are subjected to a final check before shipment,** at this stage, the aim is to make the final controls that the packaging is done in direction of customers' requests.
- 4- Loading & Pre-Shipment Controls: **At the last stage of Biomtc Dental Implant System Quality Control, product loading controls are carried out,** counting and sequencing of loaded products is done by our professional team in order to prevent any risk that may arise during the transfer.



## Traceability

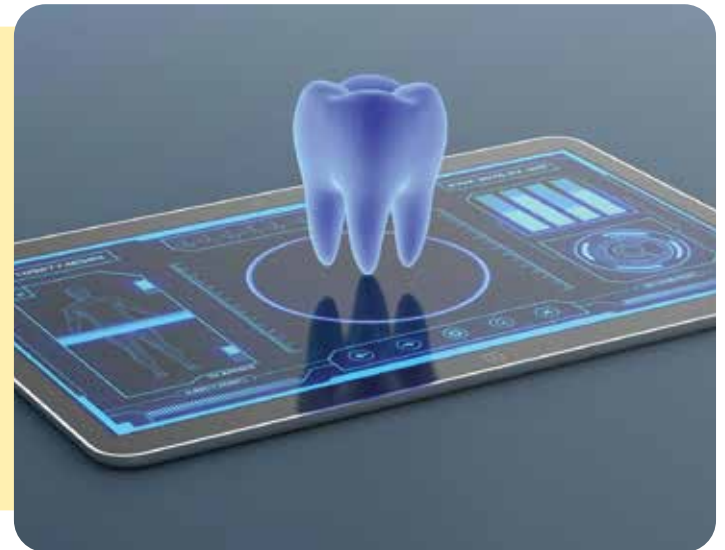
Biomtc Dental Implant Systems can be tracked from the first stages of production to the end user. Using our innovative software, each product has been given a barcode and lot number.

Thanks to these numbers, the product's production date, expiry date, status, the operations performed on the product and generally the path followed from production to use can be tracked.

## Digital Solutions

3D information of the products belonging to Biomtc Dental Implant Systems is available in the libraries of Dental Wings, Exocad and updates on the products are also made on the system.

Our cooperation with our software partners is made to enable our physicians to reach the most up-to-date solutions.





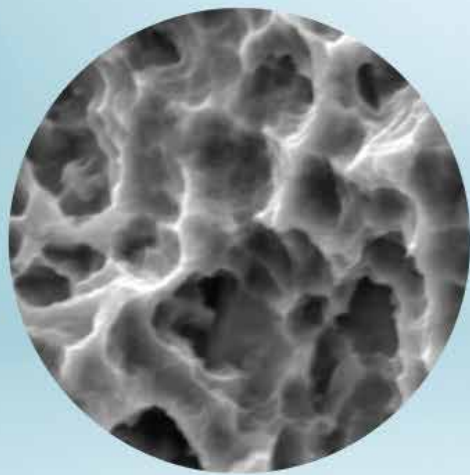
## Packaging & Labeling

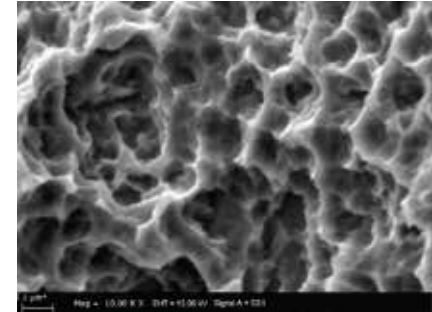
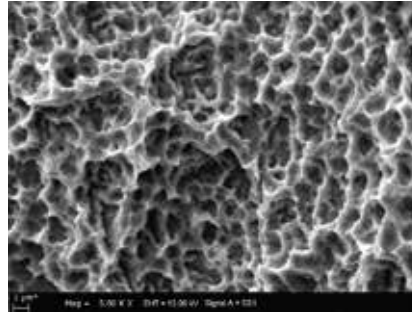
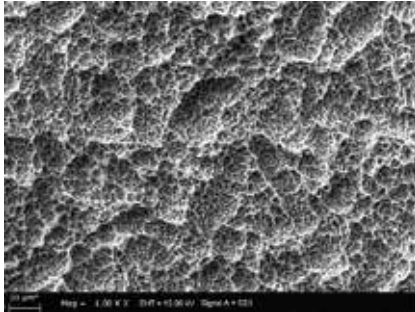
In order to maximize customer satisfaction, our packages and labels have been designed by our professional team to increase the comfort and efficiency of our physicians during surgery.

A barcode containing length and diameter information, production and expiry date, lot number and information on the product has been designed on the labels, and the label and tube colors are presented in different colors according to the implant diameter.

All Biomtc Products are approved by the Ministry of Health and can be tracked through the Ministry of Health Product Tracking System with the barcode on the product.







## SLA Surface

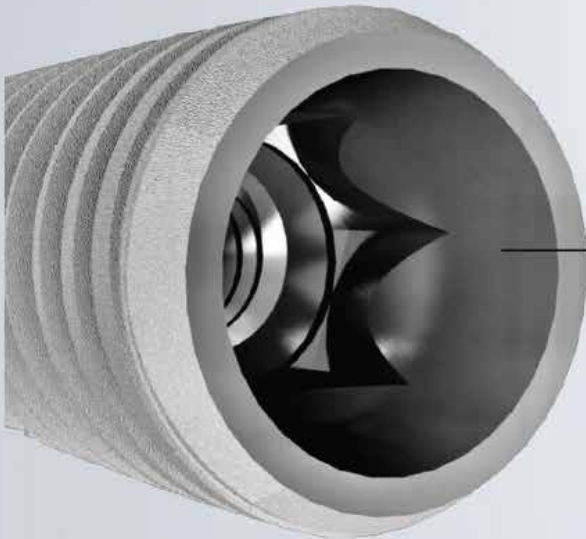
It is a surface developed to accelerate the biological effect of cell adhesion, strengthen the osseointegration process and subsequently achieve a more successful clinical result.

While the surface is obtained, it is first subjected to mechanical treatment (sandblasting with Aluminium Oxide) after the roughening process formed on the surface, chemical etching and cleaning process (Large Acid Etched) and finally the surface becomes a hydrophilic surface active with cold Argon Plasma. This increases the adhesion of osteoblastic cells and creates a highly clean surface characterized by homogeneous micro-porosity of a few microns to support the osteogenesis process.

All these factors provide the best anchorage from bone to implant and maximize the torque force required for implant removal. Therefore, all these procedures are the most effective method preferred in implantology to increase osseointegration time and quality



## | Implant Design



Internal Hexagonal Structure  
& Conical Connection



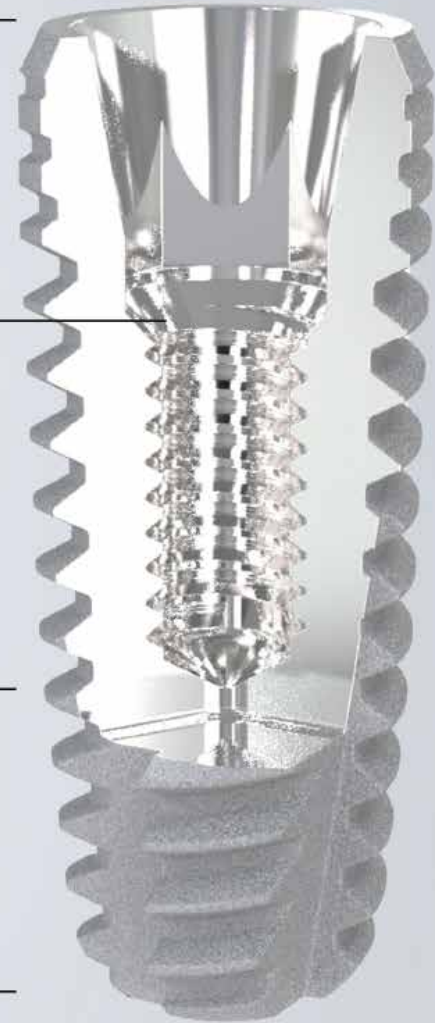
Platform Switching  
Conical Self Locking  
Mors Taper Connection  
Natural Looking Results

Bone Level

11° Conical Connection

Self Cutting Thread

Rounded Apex



**Material**

Titanium Grade 4 Commercially Pure  
Cold Worked-Resistance More Than %40

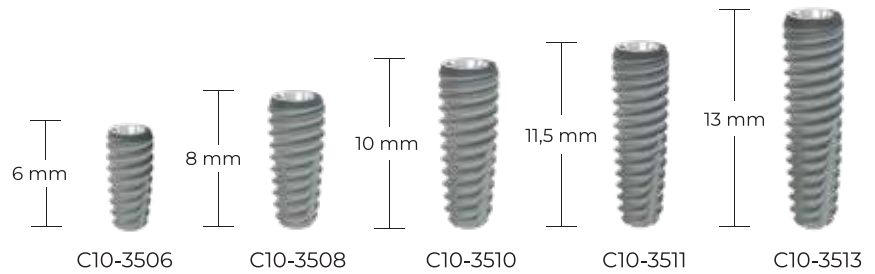
# Implants

Diameter

Ø 3.5

Titanium  
Grade 4

Ref No:

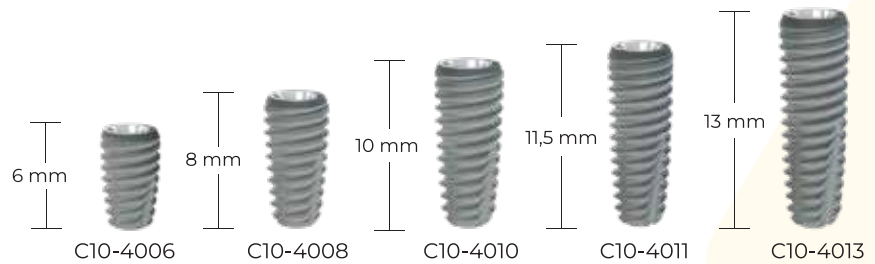


Diameter

Ø 4.0

Titanium  
Grade 4

Ref No:

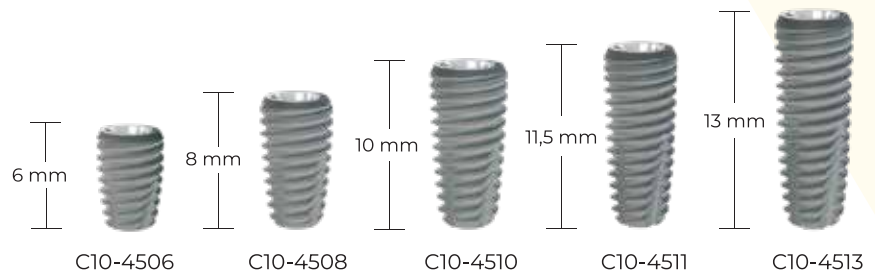


Diameter

Ø 4.5

Titanium  
Grade 4

Ref No:



Diameter

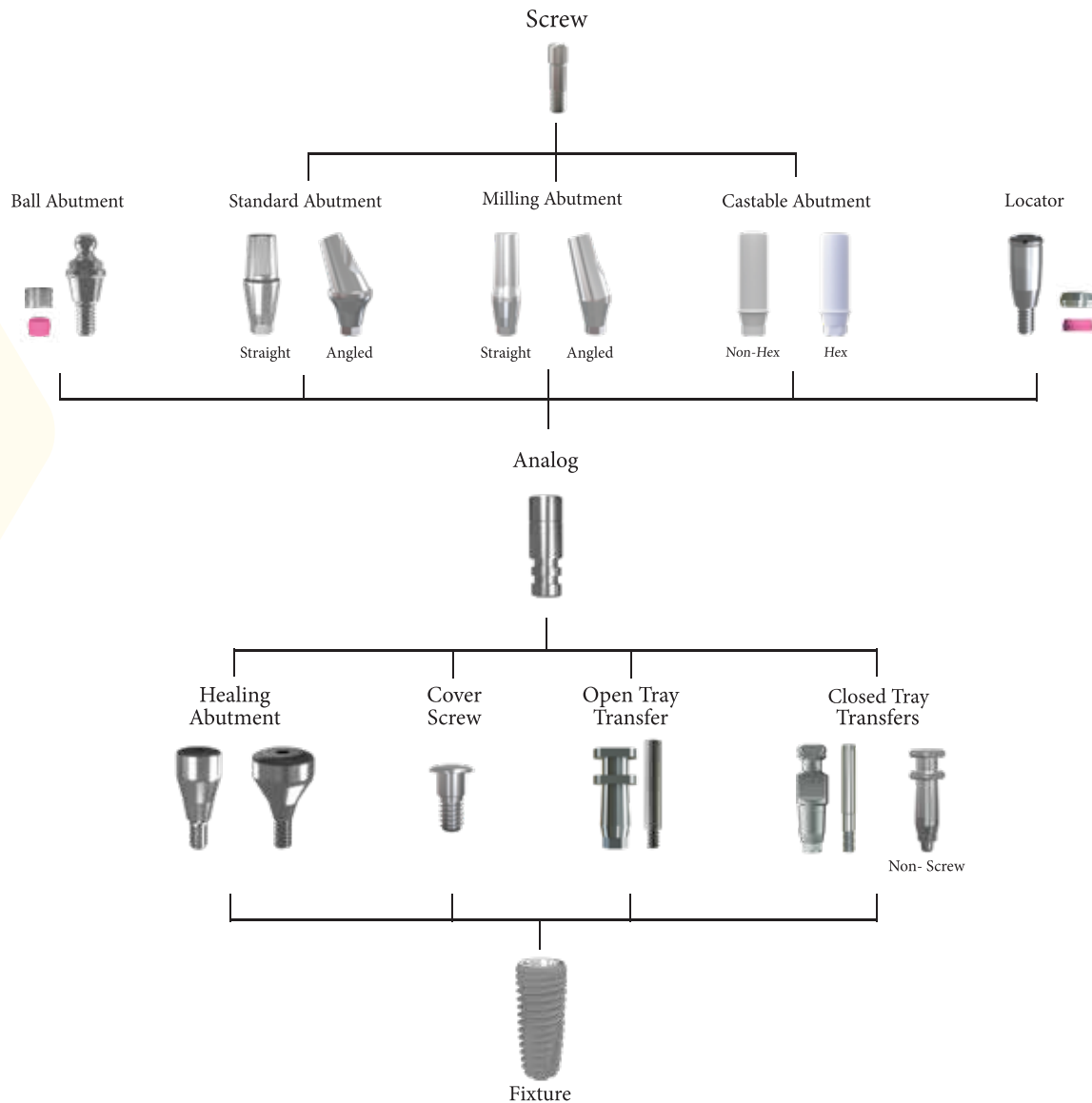
Ø 5.0

Titanium  
Grade 4

Ref No:



# Prosthetic Flow Diagram



# Prosthetics



# Healing & Impression

Titanium  
Grade 5



## Gingiva Former

Ø	4.5	5.5
GH	Ref No	Ref No
2 mm	CE30-GF4520	CE30-GF5520
3 mm	CE30-GF4530	CE30-GF5530
5 mm	CE30-GF4550	CE30-GF5550
7 mm	CE30-GF4570	CE30-GF5570

## Analoglar

## Analogues

Titanium  
Grade 5



Product	Ref No
Standard	CE32-SLA
Digital	CE32-DLA



# Healing & Impression



Transferler

Transfers

Titanium  
Grade 5



Product	Ref No
Open Tray - Short	CE31-OTS
Open Tray - Long	CE31-OTL
Closed Tray - Short	CE31-CTS
Closed Tray - Long	CE31-CTL
Non-Screw	CE31-TNS

# Abutment Options

With its wide range of prosthetic products, Biomtc Dental Implant Systems provide great comfort for dentists and laboratories.



## Regular Abutments

Titanium  
Grade 5

30 Ncm



∅	4.5 mm	5.5 mm
GH	Ref No	Ref No
1 mm	CE21-004510	CE21-005510
2 mm	CE21-004520	CE21-005520
3 mm	CE21-004530	CE21-005530
4 mm	CE21-004540	CE21-005540

# Abutment Options

## Angled Abutments

Ø 4.5

Titanium  
Grade 5

30 Ncm



Açı (Angle)	15°	25°
GH	Ref No	Ref No
1 mm	CE21-154510	CE21-254510
2 mm	CE21-154520	CE21-254520
3 mm	CE21-154530	CE21-254530
4 mm	CE21-154540	CE21-254540

## Angled Abutments

Ø 5.5

Titanium  
Grade 5

30 Ncm



Açı (Angle)	15°	25°
GH	Ref No	Ref No
1 mm	CE21-155510	CE21-255510
2 mm	CE21-155520	CE21-255520
3 mm	CE21-155530	CE21-255530
4 mm	CE21-155540	CE21-255540

# Abutment Options

## Ball Abutment

Titanium  
Grade 5

30 Ncm

Ball  $\varnothing$   
2,25mm



GH	Ref No
1 mm	CE24-B0010
2 mm	CE24-B0020
3 mm	CE24-B0030
4 mm	CE24-B0040
5 mm	CE24-B0050
7 mm	CE24-B0070

## Locator

Titanium  
Grade 5

30 Ncm



GH	Ref No
1 mm	CE25-LOC10
2 mm	CE25-LOC20
3 mm	CE25-LOC30
4 mm	CE25-LOC40
5 mm	CE25-LOC50
7 mm	CE25-LOC70

# Abutment Options

## Milling Abutment

Titanium  
Grade 5

30 Ncm



(Angle)	Type	Ref No
9 mm-0°	Standard	CE20-004509
12 mm-0°	Standard	CE20-004512
15 mm-0°	Standard	CE20-004515
12 mm-0°	Thin	CE20-004012
12 mm-0°	Thick	CE20-005512
12 mm-15°	Standard	CE20-154512
12 mm-25°	Standard	CE20-254512

## Castable Abutment

POM-C

30 Ncm



Ref No	Type
CE35-CAR	Rotational
CE35-CAA	Antirotational

## Premilled Abutment

Titanium  
Grade 5

30 Ncm



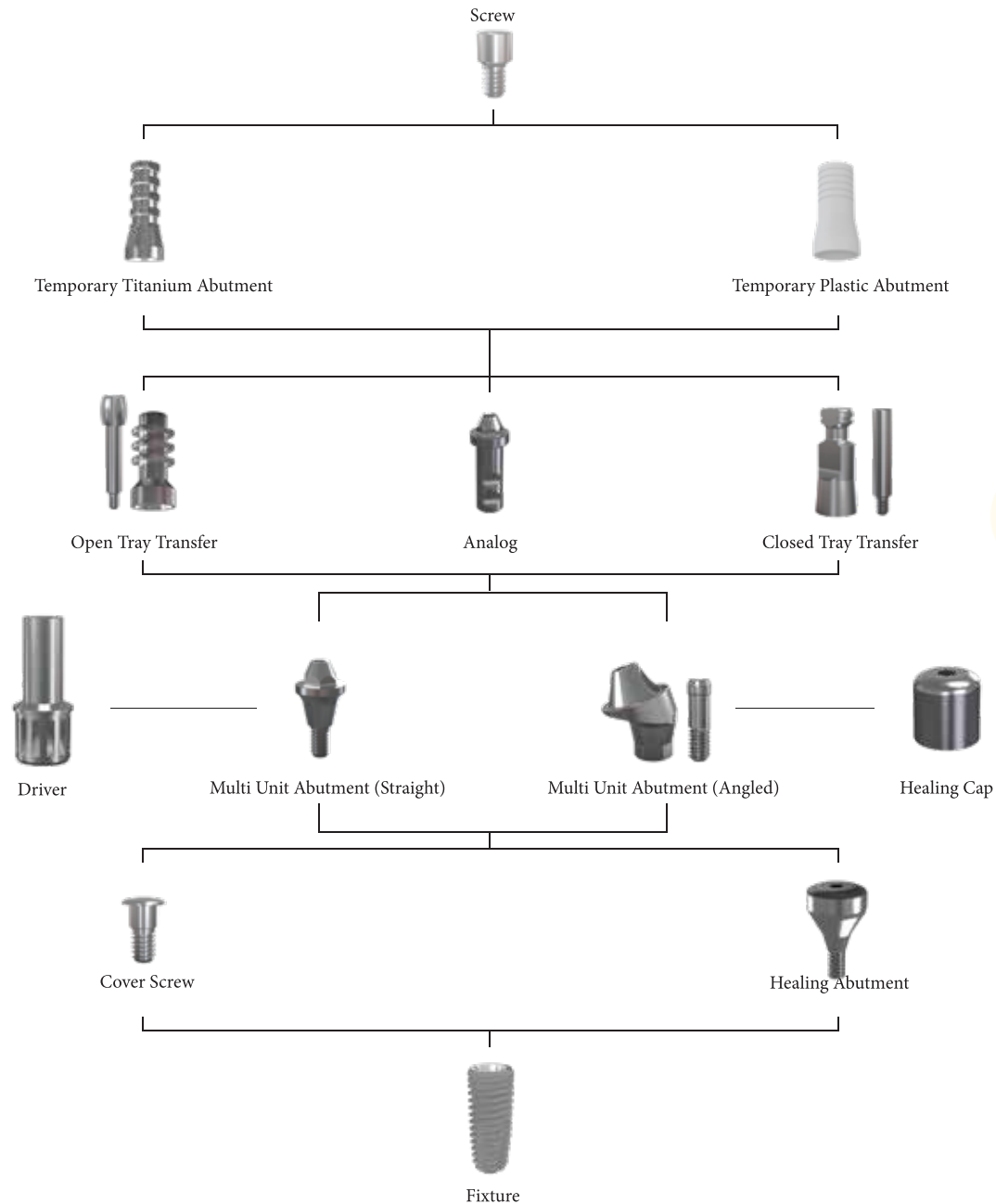
Ref No	Type
CE29-TCAR	Rotational
CE29-TCAA	Antirotational

# Multi Unit Abutments





# Prosthetic Flow Diagram (Multi Unit)



# Multi Unit Abutments

## Multi Unit Abutment

Titanium  
Grade 5

30 Ncm



GH	Referans No
1 mm	CE23-004510
2 mm	CE23-004520
3 mm	CE23-004530
4 mm	CE23-004540
5 mm	CE23-004550
7 mm	CE23-004570

## Antirotational Options

Titanium  
Grade 5

30 Ncm



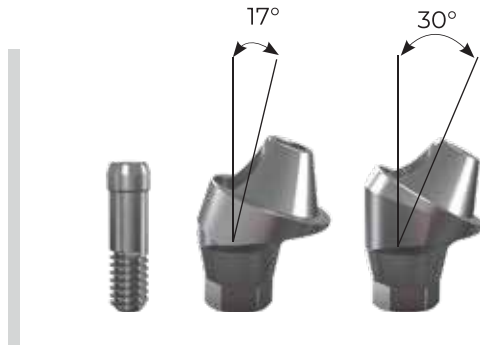
GH	Referans No
1 mm	CE23-004510A
3 mm	CE23-004530A

# Multi Unit Abutments

## Multi Unit Abutment

Titanium  
Grade 5

30 Ncm



GH-Açı(Angled)	Ref No
1 mm-17°	CE23-174510
3 mm-17°	CE23-174530
1 mm-30°	CE23-304510
3 mm-30°	CE23-304530

## Temporary Abutment

Titanium  
Grade 5

POM-C

20 Ncm



Ref No	Type
CE20-ETA	Titanium
CE35-EAACA	Plastic
CE35-EAACAH	Plastic Hex

# Multi Unit Healing & Impression

Multi Unit Open Tray Transfer



Ref No: CE31-EATOT

Multi Unit Closed Tray Transfer



Ref No: CE31-EATCT

Multi Unit Laboratory Analog



Ref No: CE31-ELA

Titanium  
Grade 5

Multi Unit Gingiva Former



Ref No: CE30-EGF

Multi Unit Abutment Driver



Ref No: CE39-EAD

Titanium  
Grade 5

# Prosthetics for CAD/CAM

## Scan Body

Titanium  
Grade 5



Product	Ref No
Scan Body	CE36-SB

\*Exocad \*Dental Wings

## Ti-Base Abutment

Titanium  
Grade 5

30 Ncm



GH	Ref No
1 mm Standart	CE26-TB10
3 mm Standart	CE26-TB30
1 mm Non Hex	CE26-TBN10
3 mm Non Hex	CE26-TBN30

\*Exocad \*Dental Wings

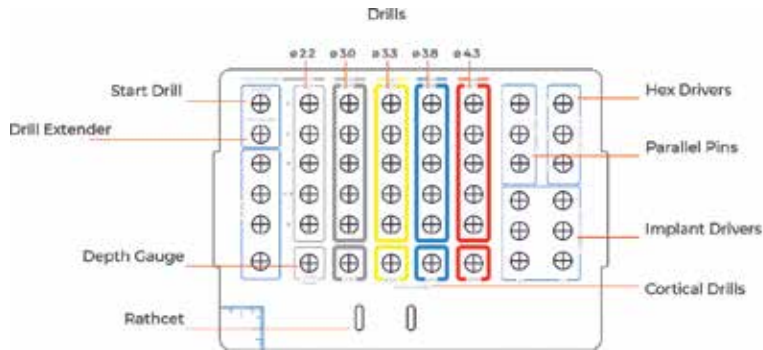
# Surgical Kits





# Surgical Kits

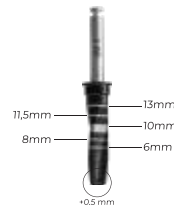
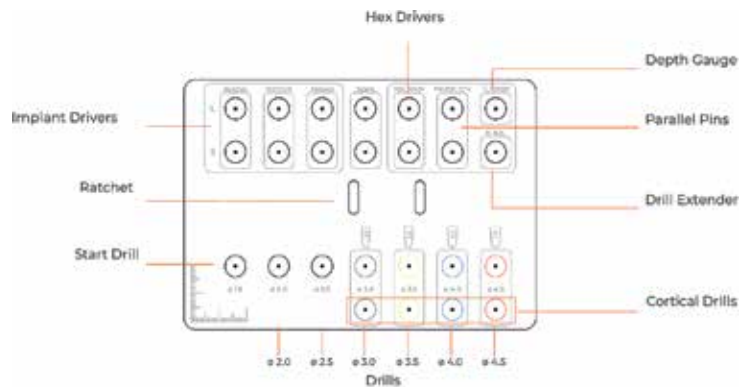
## Standart Surgical Kit Layout



Ref No: DSK-0001

*Biomtc Dental Systems drills are 0.5 mm longer than implant lengths. Planning should be made according to this.*

## Mini Surgical Kit Layout



Ref No: DSK-0002

# Surgical Kit Components

## Mini Set/Mini Kit/DSK-0002

Component Name	Ref No
Product Name	Ref No
Start Drill	DSK-PD00
Drill Ø 2	DSK-M2000
Drill Ø 2,5	DSK-M2500
Drill Ø 3	DSK-M3000
Drill Ø 3,5	DSK-M3500
Drill Ø 4	DSK-M4000
Drill Ø 4,5	DSK-M4500
Cortical Drill Ø 3,5	DSK-CD35
Cortical Drill Ø 4	DSK-CD40
Cortical Drill Ø 4,5	DSK-CD45
Cortical Drill Ø 5	DSK-CD50
Drill Extender	DSK-DE
Ratchet Adaptor Short	DSK-RAS
Ratchet Adaptor Long	DSK-RAL
Manual Adaptor Short	DSK-RIAS
Manual Adaptor Long	DSK-RIAL
Machine Adaptor Short	DSK-CAA
Machine Adaptor Long	DSK-CAAL
Parallel Pin	DSK-PP00
Depth Gauge	DSK-DG
Hex Driver Short	DSK-RHDS
Hex Driver Long	DSK-RHDL
Ratchet	DSK-RW
Tork	DSK-TW
Handle	DSK-HANDLE



# Biomtc

## Dental Implant Systems



Scan me for the website



Scan me for the Whatsapp